

D4E225-CC01-30

AC centrifugal fan

forward curved, dual inlet
with housing (flange)



ASIA PACIFIC SHENGRUI LIMITED

Phone +00852 56261528

info@apacfan.com

www.apacfan.com



Nominal data

Type	D4E225-CC01-30	
Motor	M4E074-LA	
Phase		1~
Nominal voltage	VAC	230
Frequency	Hz	50
Type of data definition		ml
Valid for approval / standard		CE
Speed	min ⁻¹	1150
Power input	W	650
Current draw	A	2.84
Motor capacitor	μF	25
Capacitor voltage	VDB	400
Capacitor standard		P2 (CE)
Min. back pressure	Pa	100
Min. ambient temperature	°C	-25
Max. ambient temperature	°C	30

ml = max. load · me = max. efficiency · fa = running at free air · cs = customer specs · cu = customer unit
Subject to alterations

Data according to ErP directive

Installation category	B
Efficiency category	Total
Closed-loop speed control	No
Specific ratio*	1,00

* Specific ratio = $1 + p_{sf} / 100\,000$

	Actual	Request 2013	Request 2015
Overall efficiency η_e	36,5	33,9	40,9
Efficiency grade N	44,6	42	49
Power input P_e	kW	0,53	
Air flow q_v	m ³ /h	1965	
Pressure increase Total p_{sf}	Pa	361	
Speed n	min ⁻¹	1335	

Data established at point of optimum efficiency



AC centrifugal fan

forward curved, dual inlet
with housing (flange)

Technical features

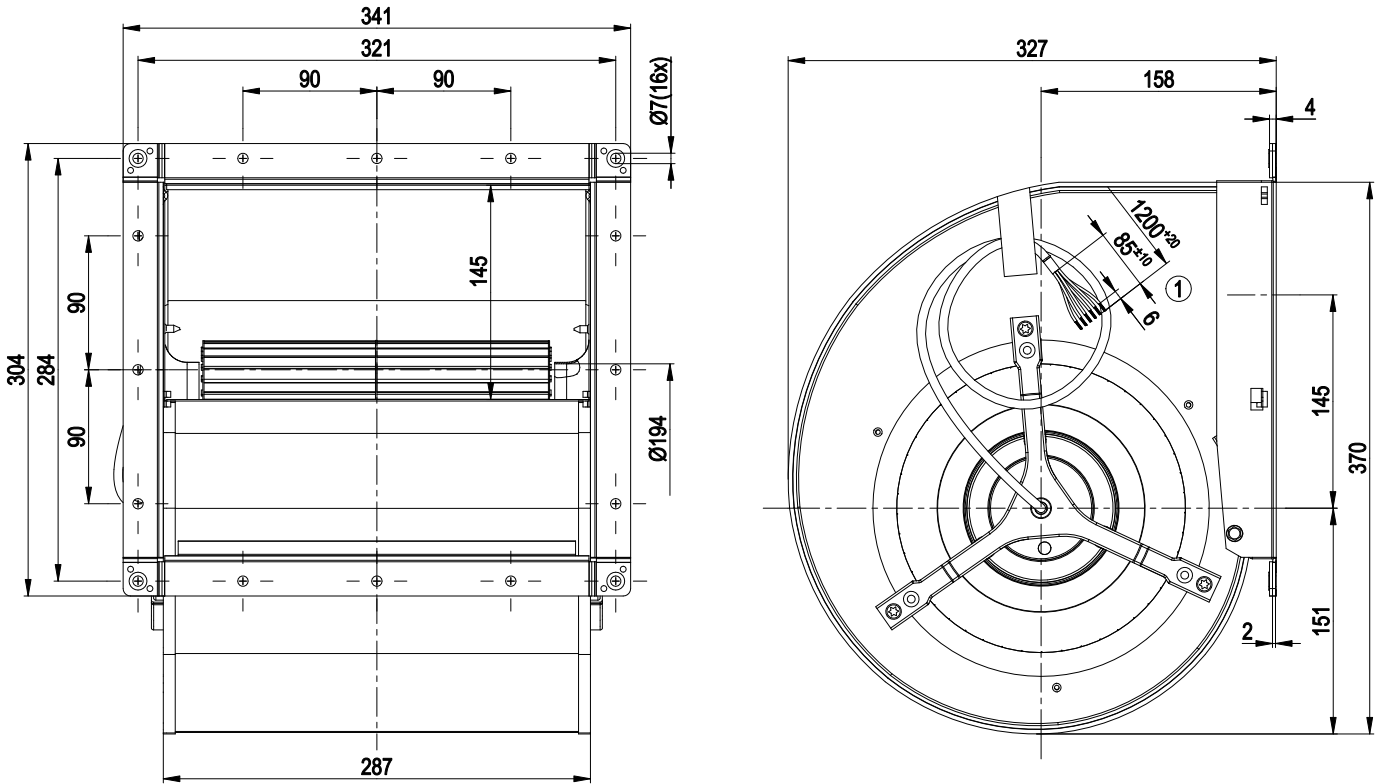
Material of support structure	Sheet steel, hot-galvanised
Mass	13 kg
Size	225 mm
Material of impeller	Sheet steel, hot-galvanised
Housing material	Sheet steel, hot-galvanised
Motor suspension	Motor anti-vibration mounted on both sides
Direction of rotation	Counter-clockwise, seen on rotor
Type of protection	IP 22; Depending on installation and position
Insulation class	"B"
Humidity class	F2-1
Max. permissible ambient motor temp. (transp./ storage)	+ 80 °C
Min. permissible ambient motor temp. (transp./storage)	- 40 °C
Mounting position	Any
Condensate discharge holes	None
Operation mode	S1
Motor bearing	Ball bearing
Leakage current	< 0.75 mA
Motor protection	Thermal overload protector (TOP) brought out
Protection class	I (if protective earth is connected by customer)
Product conforming to standard	EN 60335-1; CE
Approval	CCC



AC centrifugal fan

forward curved, dual inlet
with housing (flange)

Product drawing

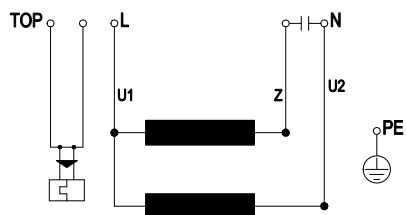


1 Connection line ETFE AWG20 0.5mm², 6x brass lead tips crimped

AC centrifugal fan

forward curved, dual inlet
with housing (flange)

Connection screen



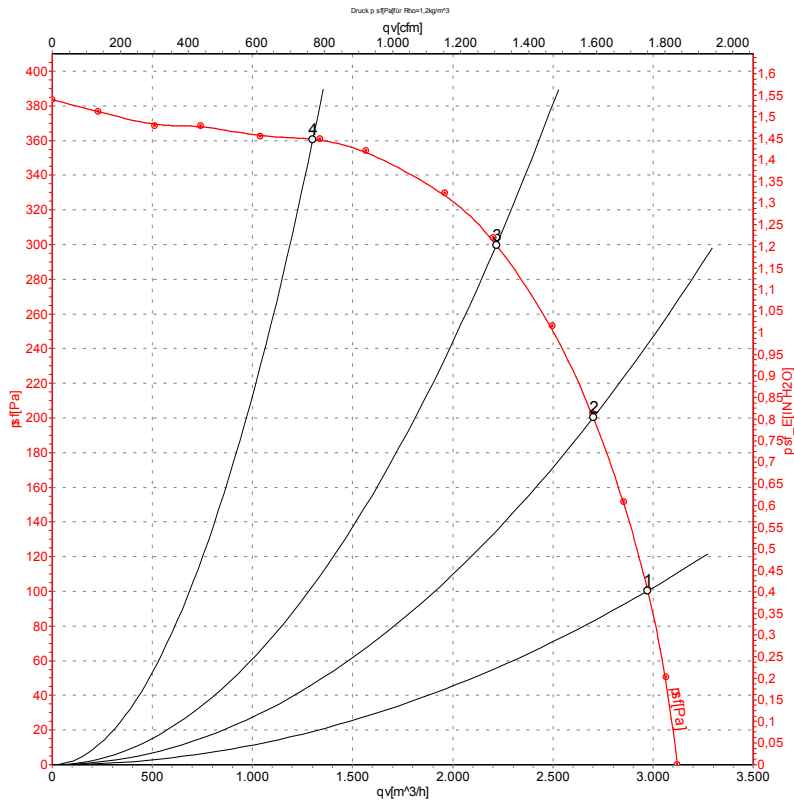
Note: TOP brought out

TOP	2 x grey	U1	blue	Z	brown
U2	black	PE	green / yellow		

AC centrifugal fan

forward curved, dual inlet
with housing (flange)

Charts: Air flow 50 Hz



Measurement: LU-35314

Air performance measured as per ISO 5801 Installation category A. For detailed information on the measuring set-up, please contact ebm-papst. Suction-side noise levels: L_{wA} measured as per ISO 13347 / L_{pA} measured with 1m distance to fan axis. The values given are valid under the measuring conditions mentioned above and may vary according to the actual installation situation. With any deviation from the standard set-up, the specific values have to be checked and reviewed with the unit installed.

Measured values

	U	f	n	P _e	I	qv	P _{sf}
	V	Hz	min ⁻¹	W	A	m ³ /h	Pa
1	230	50	1150	783	3.42	2975	100
2	230	50	1195	689	3.05	2700	200
3	230	50	1300	581	2.65	2215	300
4	230	50	1395	445	2.15	1300	360

